

Automatic folder gluer model Brausse Forza 110

All machines installed by Brausse Europe have the VinTechMa label. www.vintechma.com

Highlights of all Brausse machines

- All electrical components are of the shelf brand names such as Omron and Telemecanique
- All PLC controls are from Yaskawa/Omron
- All operating software in the local language

1



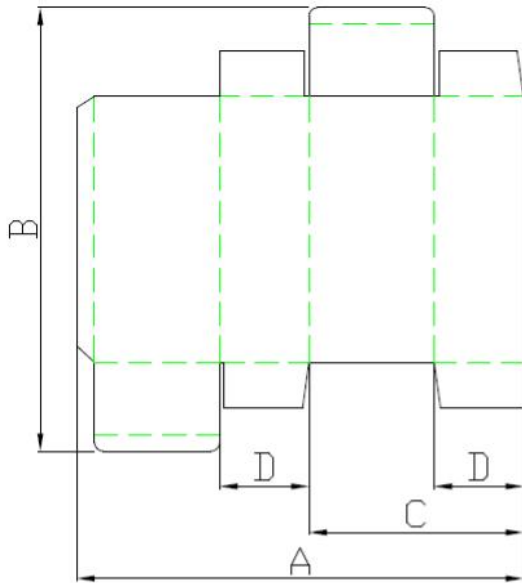
Pictures might be slightly different from reality. Shown machine is with side alignment and extended compression section (optional)

Specifications

Material	solid board up to 800 g/m ² Corrugated up to E-flute
Max. belt speed	320 m/min (425 m/min with option)
Overall length	11.170 mm 12370 mm including side alignment
Overall height	1600 mm
Overall width	2300 mm
Total net weight	5,5 t
Power voltage	400 V / 50 Hz
Main motor	15 KW
Motor for Feeder	2.2 KW
Motor for Trombone section	3 KW
Motor for conveyor belt	2.2 KW
Two motors for Back Fold System	5.5 KW
Total power supply	26.4 KW
Air supply / consumption	6 bar / 700 l per min

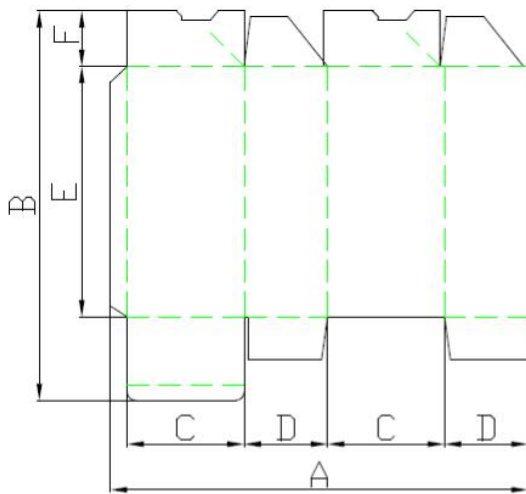
The compressed air quality must be according to ISO 8573/1 with:

- Filtration on solid parts Class 4
- Filtration on oil Class 4
- Dry air Class 4



Straight-line

- A 126-1100 mm
76-1100 mm with small box device
- B 60-800 mm
- C 55-540 mm
- D minimum 8 mm



Lock bottom

- A 160-1075 mm
- B 150-900 mm
- C minimum 47 mm
- D minimum 30 mm
- E minimum 65 mm
- F minimum 28 mm

Feeder section

- Eight individual adjustable feed belts to ensure easy setup and smooth feeding.
- Designated A/C motor with micro-adjustable variable speed controller for even spacing of box blanks.
- Feeder start/stop can be controlled by remote controller at any operation area.
- Two standard feeder gates (26mm or 1.02" wide), one supporting feeder gate (26mm or 1.02" wide) for odd cartons and wide boxes.
- Air cylinder controlled up and down movement of side guides and feeder gates, easy to adjust.
- Two short supportors with wheel and two long supportors sustain the pile of blanks for perfect feeding.
- Four adjustable side guides.
- Mechanical vibration system for smooth and consistent feeding.
- Belt cleaning brush with easy angle adjustment for better cleaning of belt surface to increase the feeding stability.
- Suction feeding system (Optional).
- Optional 2 carrier Side Alignment Section
- Optional 3 carrier Side Alignment Section

Pre-breaking system

- Three carriers throughout with pre-breaking sword (180°) on the left side and belt pre-break device (135°) on right side enable the pre-fold of the 1st and 3rd crease lines to make final automatic filling much easier.
- Sectional upper carrier combined with special design can be telescopically adjusted, no need to tension the belts, quick set up and job change over.
- Optional UV grinding and air blower system, or plasma surface treatment machine.

4

Lock bottom section

- Three-carrier construction with split upper carriers.
- Easy for mounting lock bottom accessories, more operator friendly.
- Sectional upper carrier has the same design function as the one in pre-breaking section, suitable for make special shape boxes.

Back folding system

- Ø Servomotor controlled back folding system for 4/6-corner box:
 - a. Two hook operation mode: there are two movement as #1 for short flap and #2 for long flap;
 - b. #1 and #2 back-fold shafts controlled individually;
 - c. Photo blank detecting sensor can be mounted on any place;
 - d. Easy to take off and put on the hook, one bolt only;
 - e. Data entry keypad with digital display and the back folding system can be operated easily.
- Ø Easy position adjustment for side folding guides.

Gluing system

- Lower gluing wheel system (3,2 mm)
- Left and right lower gluing system

Folding section

- Three belt carriers
- Speed adjustment for left and right fold belt
- Entrance of the upper belt carrier adjustable in height
- Top belt can be lifted

Heavy duty double frame trombone section

- Batch counter and kicker
- Jam detector

Compression section

- Two operation modes for compressing the folded boxes:
 - ü Auto - belt speed depending on machine speed: box flow without spacing
 - ü Manual - belt runs at a constant speed
- Additional press belt for extra compression for crash lock boxes

General

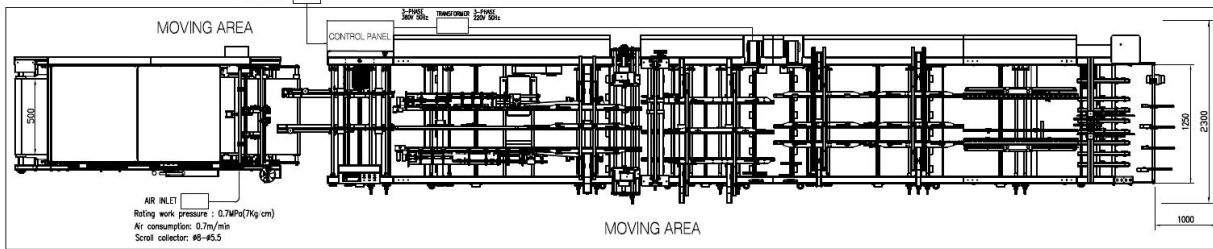
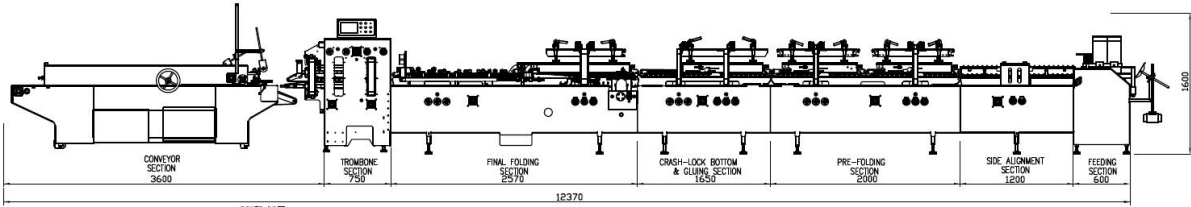
- One pin wrench adjustment operation throughout the machine, operator friendly
- All the adjustment can be made without any tools
- Digital positioning gauge's
- Upper belt width 20 mm, lower belt width 30 mm on the pre-break & gluing section
- Upper belt width 16 mm, lower belt width 30 mm on the folding section
- Electronic batch counter and kicker
- Electronical remote control
- Easy one-hand carrier position adjustment
- Belt speed detecting encoder on the belt drive shaft

Changes in construction preserved.

The machine Brausse Forza 110 is delivered with the European CE certificate.

(OPERATOR'S WORKING AREA)

TA1100-II-C6
FOLDING & GLUER MACHINE



* SPECIFICATION *

MAIN MOTOR	15KW	TOTAL POWER	35KVA
FEEDER MOTOR	2.2KW	MAX BELT SPEED	320 m/min
TROMBONE MOTOR	3KW	MAX. PUMPING CAPACITY	0.7m ³ /min
CONVEYOR MOTOR	2.2KW	TOTAL WEIGHT	5500 Kg

*** For complete folder-gluer specifications refer to the product brochure.



DRAWN	DESIGNED	APPROVED	PROG. DATE	UNIT SCALE	DWG NO.
JL	JL	JL	14.2.18	imm NONE	TA-1100-II-C6
TITLE : TA1100-II-C6					TA-1100-II-C6

飞达部 FEEDING SECTION	校正部 SIDE ALIGNMENT SECTION	预折部 PRE-FOLDING SECTION	勾底部 BOTTOM SECTION	本折部 FINAL FOLDING SECTION	压著部 TROMBONE SECTION	DWG NO. TA1100-C6-II
⑧1X25X1200 ⑧1X25X1200	4X50X3100	4X30X4100 4X20X2400 4X25X4800	4X20X1850 4X20X2200 4X25X4050	4X50X7000 4X30X7000 4X20X2900 4X30X6000	4X30X4600 4X30X3750	SCALE 13.12.15
⑧1X25X1200 ⑧1X25X1200 ⑧1X25X1200 ⑧1X25X1200	4X20X2550 4X25X3100	4X20X2400 4X25X4800	4X20X4000 4X25X4050	4X20X3250 4X25X6000	4X30X4600 4X30X3750	APPROVED DWG DATE 13.12.15
⑧1X25X1200 ⑧1X25X1200	4X50X3100	4X20X2400 4X25X4800 4X30X4100	4X20X1850 4X20X2200 4X25X4050	4X20X2900 4X30X6000 4X50X7000 4X30X7000		TITLE : TA1100-C6-II
收纸部 CONVEYOR SECTION		4X1X30X530-2EA 10X1X50X6560-2EA 2X1X800X6560 2X1X800X9150				DRAWN SCALE 1:1