



Automatic folder gluer
model Brausse Forza 55

All machines installed by Brausse Europe have the VinTechMa label. www.vintechma.com

Highlights of all Brausse machines

- All electrical components are from Omron and Siemens
- All PLC controls are from Mitsubishi
- All operating software in the local language



1

Pictures might be slightly different from reality

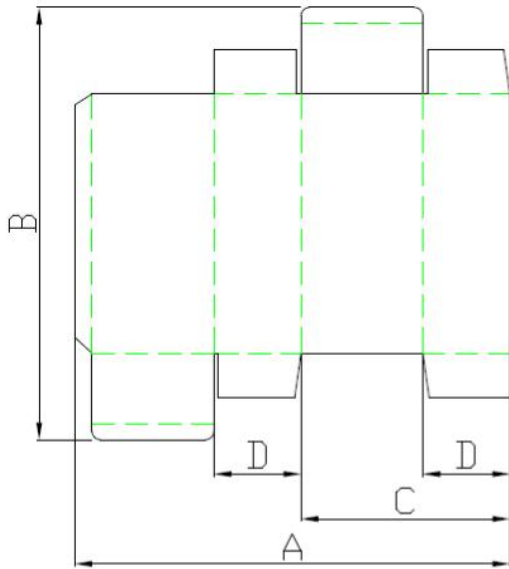


Specifications

Material	carton up to 800 g/m ² & up to E-flute
Max. belt speed	300 m/min
Max. sheet size	550 mm W x 450 mm L
Min. sheet size	100 mm W x 55 mm L
	70 mm W x 55 mm L (small box folding device applied as optional)
Overall length	9500 mm
Overall height	1300 mm
Overall width	1200 mm
Total net weight	4 t
Power voltage	400 V / 50 Hz
Power supply for main motor	15 kW
Power supply for additional motors	1,5 kW
Total power supply	20 kVA
Air supply / consumption	6 bar / 700 l per min

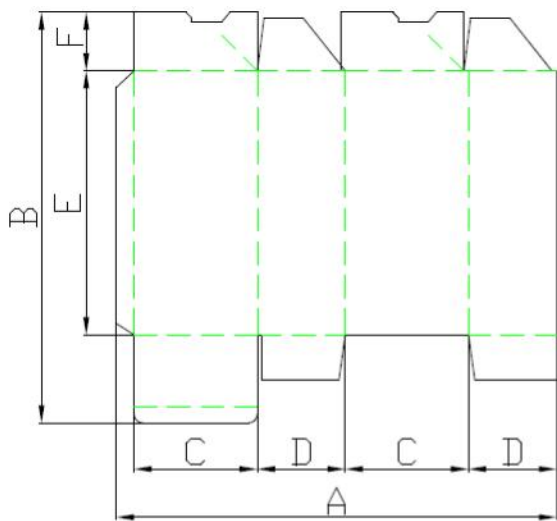
The compressed air quality must be according to ISO 8573/1 with:

- Filtration on solid parts Class 4
- Filtration on oil Class 4
- Dry air Class 4



Straight-line

- A 100-550 mm
- 70-550 mm with small box device
- B 55-450 mm
- C 55-340 mm
- D minimum 8 mm



Lock bottom

- A 100-555 mm
- B 55-450 mm
- C minimum 40 mm
- D minimum 30 mm
- E minimum 65 mm
- F minimum 28 mm

Feeder section

- Five individually adjustable feed belts with quick adjustment system
- Feeder start/stop can be controlled at all operator stations
- Two standard feeder gates (26mm or 1.02" wide), one supporting feeder gate (26mm or 1.02" wide)
- Four adjustable side guides
- Vibration system for smooth and consistent feeding
- Suction feeding system (optional)

Pre-breaking system

- Two carriers throughout with split upper carriers in pre-breaking section. This allows special compound folds such as interior, Z folds (pre-breaking sword can be put at the left side)
- Manual carrier-positioning system throughout the machine (for both carrier and upper belts)
- Top carriers have reinforced tops throughout for mounting accessories, which are single pinwrench adjustments. This allows for faster setup and makes the machine more 'user friendly'
- Belt pre-break device (135°) on right side only

Gluing system

- Two sets conventional lower gluing pot (left and right side, 3mm width) at final folding section
- Non-contact gluing system can be applied (optional)
- Non-contact gluing system (with 2 guns or more) must be applied when making lock-bottom boxes

Folding section

- Two-carrier construction
- One handle makes belt speed adjustable on both sides' carriers
- Loosening only two bolts can change the position of belt guide wheel

Heavy duty double frame trombone section

- Batch counter kicker
- Jam detector

Compression section

- Two operation modes for compressing the folded boxes:
 - ü Auto - belt speed depending on machine speed: box flow without spacing
 - ü Manual - belt runs at a constant speed
- Additional press belt for extra compression for crash lock boxes

General

- One pin wrench adjustment operation throughout the machine, operator friendly
- All the adjustment can be made without any tools
- Position indicator throughout the machine
- Upper belt width 20 mm, lower belt width 20 mm
- Electronic batch counter and kicker
- Air-cylinder controlled pneumatic pressing system on conveyor section
- Touch screen for control panel
- Electronic remote control
- Easy one-hand carrier position adjustment

Changes in construction preserved.

The machine Brausse FORZA 55 is delivered with the European CE certificate.

(OPERATOR'S WORKING AREA)

TA550-C6
FOLDING & GLUER MACHINE

