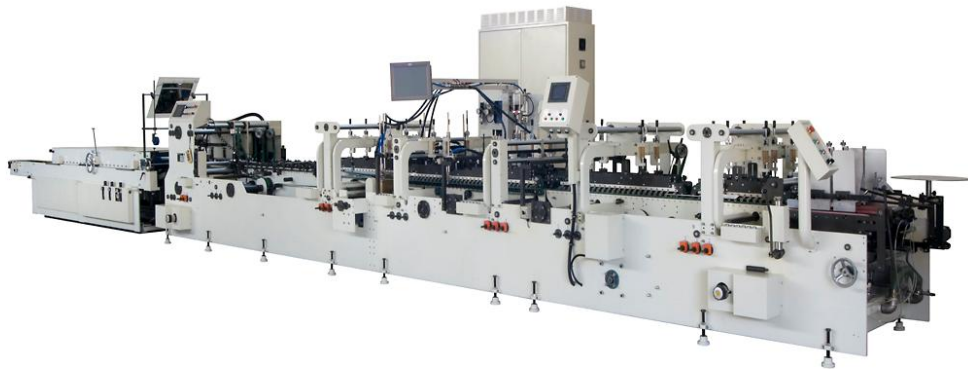


Automatic folder gluer
model Brausse Prima 1100

Highlights of all Brausse machines

- All electrical components are of the shelf brand names such as Omron and Telemecanique
- All PLC controls are from Mitsubishi
- All operating software in the local language



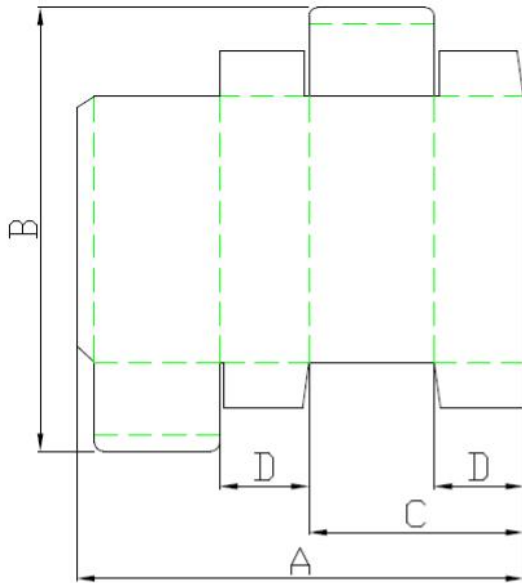
Pictures might be slightly different from reality

Specifications

Material	solid board up to 800 g/m ² corrugated up to E-flute
Trombone section max. belt speed	425 m/min
Max. belt speed	325 m/min
Overall length	12740 mm
Overall height	2000 mm
Overall width	1750 mm
Total net weight	8 t
Power voltage	400 V / 50 Hz
Power supply for main motor	22 kW
Power supply for additional motors	2,2 kW
Total power supply	30 kVA
Air supply / consumption	6 bar / 700 l per min

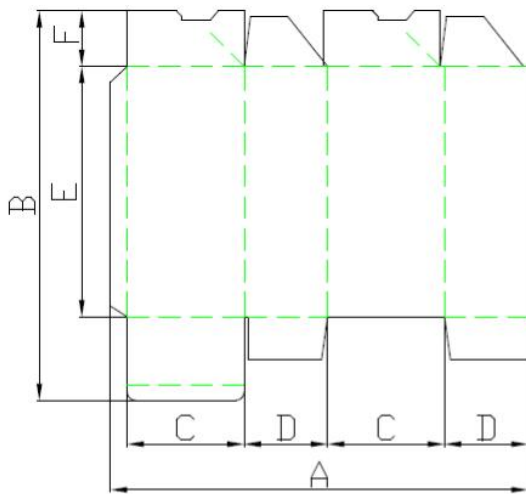
The compressed air quality must be according to ISO 8573/1 with:

- | | |
|-----------------------------|---------|
| - Filtration on solid parts | Class 4 |
| - Filtration on oil | Class 4 |
| - Dry air | Class 4 |



Straight-line

- A 120-1100 mm
- 80-1100 mm with small box device
- B 55-1100 mm
- C 55-540 mm
- D minimum 8 mm



Lock bottom

- A 160-1075 mm
- B 150-900 mm
- C minimum 47 mm
- D minimum 30 mm
- E minimum 65 mm
- F minimum 28 mm

Feeder section

- Adjustable separate tension on each belt
- Eight individually adjustable feed belts with quick adjustment system
- Cleaning brushes for the feeder belts
- Feeder start/stop can be controlled at all operator stations
- Two standard feed gates (30 mm wide) and one supporting feed gates (30 mm wide) for long, small boxes
- One lever-feeding gauge lifting mechanism to make easy feed belt adjustments
- Feeder belts adjustment can be done by one hand movement
- Short and long carriers for transport in the pre-breaker
- Four adjustable side plates
- Vibration system in feeder

Pre-breaking system

- Belt pre-brake system on the right side
- Guide pre-brake system on the left side
- Belt pre-brake system on the left side (standard on 4 and 6 corner option)
- Guide pre-brake system on the right side (standard on 4 and 6 corner option)
- Three carriers with split upper carriers in pre-breaking section. This allows special compound folds such as interior, Z folds (pre-breaking sword can be put at the left side only)
- Manual carrier-positioning system throughout the machine (for both carrier and upper belts)
- Top carriers have reinforced tops throughout for mounting accessories, which are single pin wrench adjustments
- Three upper and lower belt carriers

4

Gluing system

- Lower gluing wheel system (3,2 mm)
- Left and right lower gluing system

Folding section

- Three belt carriers
- Speed adjustment for left and right fold belt
- Entrance of the upper belt carrier adjustable in height
- Top belt can be lifted

Heavy duty double frame trombone section

- Batch counter and kicker
- Jam detector

Compression section

- Two operation modes for compressing the folded boxes:
 - ü Auto - belt speed depending on machine speed: box flow without spacing
 - ü Manual - belt runs at a constant speed
- Additional press belt for extra compression for crash lock boxes

General

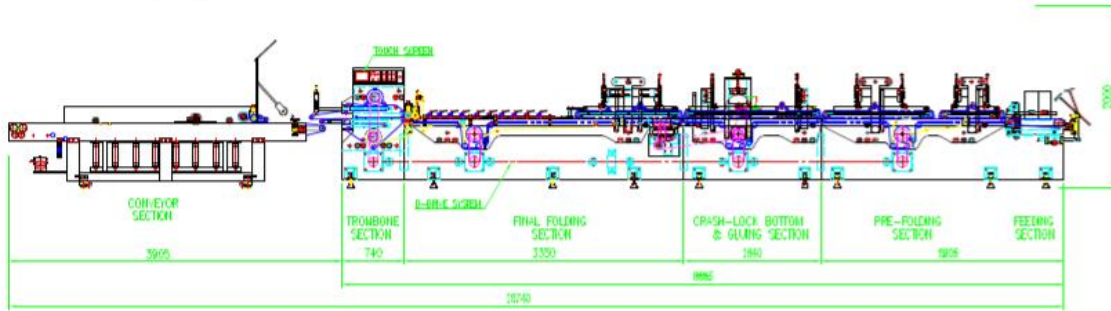
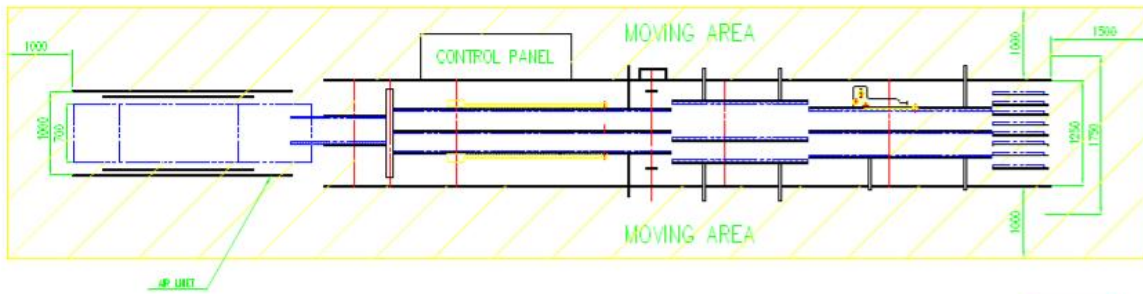
- One pin wrench adjustment operation throughout the machine, operator friendly
- All the adjustment can be made without any tools
- Digital positioning gauge's
- Upper belt width 20 mm, lower belt width 25 mm on the pre-break & gluing section
- Upper belt width 16 mm, lower belt width 20 mm on the folding section
- Electronic batch counter and kicker
- Electronical remote control
- Easy one-hand carrier position adjustment
- Belt speed detecting encoder on the belt drive shaft

Changes in construction preserved.

The machine Brausse Prima 1100 is delivered with the European CE certificate.

(OPERATOR'S WORKING AREA)

TA 1100-C3
FOLDING & GLUER MACHINE



*** For complete folder-gluer specifications refer to the product brochure.

* SPECIFICATION *

MAIN MOTOR	22kW	TROMBONE SECTION MAX BELT SPEED	425 m/min
CONVEYOR MOTOR	2.2kW	MAX PUMPING CAPACITY	0.7m ³ /min
TOTAL POWER	30kVA	TOTAL WEIGHT	8000 Kg

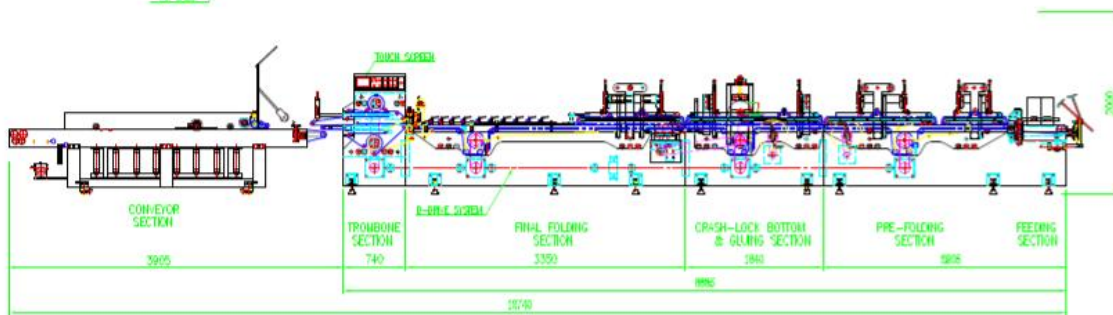
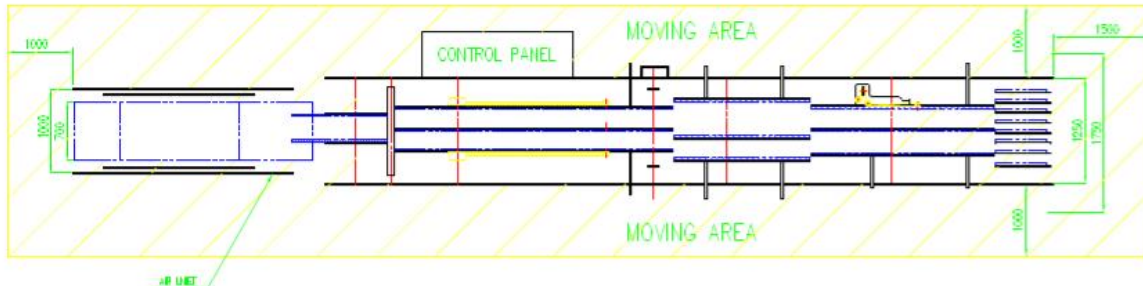


TAE YONG
ETERNA

DRAWN	DESIGNED	APPROVED	DWG DATE	UNIT/SCALE	DWG NO.
J.A. B. 2019	J.A. B. 2019	V. P. 2019	03.04.19	mm/1:1	TA-1100-C3
TITLE : TA-1100-C3					AD (400/247)

(OPERATOR'S WORKING AREA)

TA1100-C6
FOLDING & GLUER MACHINE



*** For complete folder-gluer specifications refer to the product brochure.

* SPECIFICATION *

MAIN MOTOR	22kW	TROMBONE SECTION MAX BELT SPEED	425 m/min
CONVEYOR MOTOR	2.2kW	MAX PUMPING CAPACITY	0.7m ³ /min
TOTAL POWER	40kVA	TOTAL WEIGHT	8500 kg



TAE YONG
ETERNA

DRAWN	DESIGNED	APPROVED	DWG. DATE	UNIT	SCALE	DWG. NO.
J. S. X. P. M.	J. S. X. P. M.	J. P. X. P. M.	08.04.10	mm	1:1	TA-1100-C6
TITLE : TA-1100-C6						is (required)