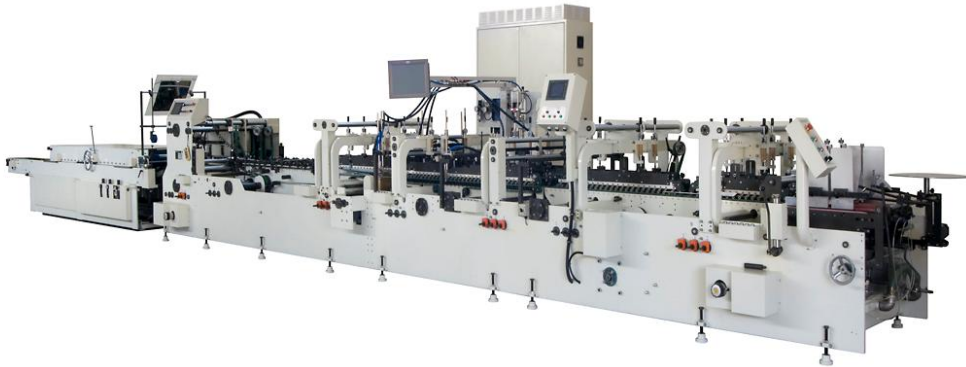


**Automatic folder gluer**  
**model Brausse Prima 650**

## Highlights of all Brausse machines

- All electrical components are from Omron and Siemens
- All PLC controls are from Mitsubishi
- All operating software in the local language



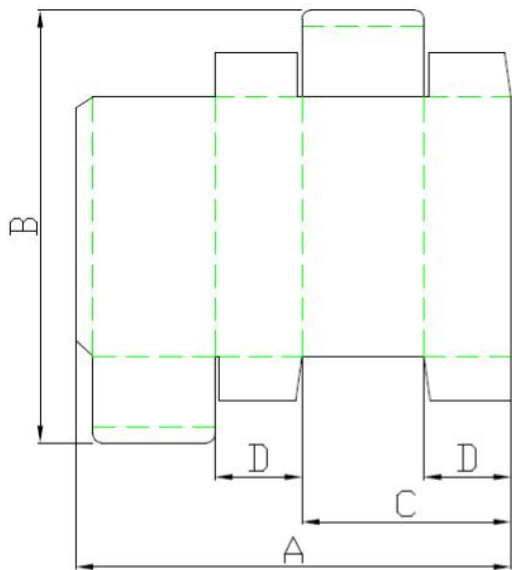
Pictures might be slightly different from reality

## Specifications

Material	carton up to 800 g/m <sup>2</sup> & up to E-flute
Trombone section max. belt speed	425 m/min
Max. belt speed	325 m/min
Overall length	12140 mm
Overall height	2000 mm
Overall width	1350 mm
Total net weight	7 t
Power voltage	400 V / 50 Hz
Power supply for main motor	15 kW
Power supply for additional motors	1,5 kW
Total power supply	20 kVA
Air supply / consumption	6 bar / 700 l per min

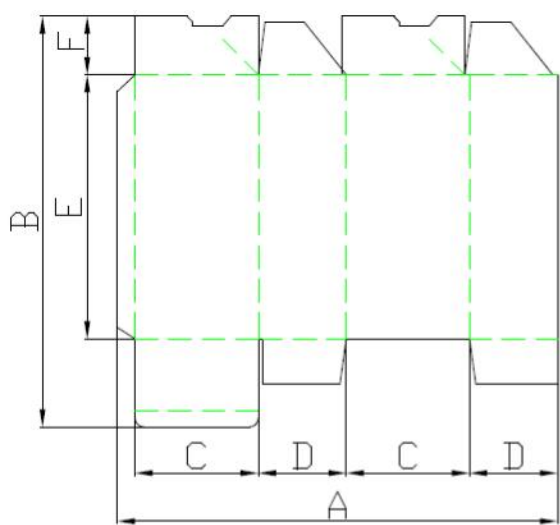
The compressed air quality must be according to ISO 8573/1 with:

- |                             |         |
|-----------------------------|---------|
| - Filtration on solid parts | Class 4 |
| - Filtration on oil         | Class 4 |
| - Dry air                   | Class 4 |



**Straight-line**

- A 100-700 mm
- 78-700 mm with small box device
- B 55-800 mm
- C 55-340 mm
- D minimum 8 mm



**Lock bottom**

- A 150-675 mm
- B 120-800 mm
- C minimum 40 mm
- D minimum 30 mm
- E minimum 65 mm
- F minimum 28 mm

### Feeder section

- Adjustable separate tension on each belt
- Six individually adjustable feed belts with quick adjustment system
- Cleaning brushes for the feeder belts
- Feeder start/stop can be controlled at all operator stations
- Two standard feed gates (30 mm wide) and one supporting feed gates (30 mm wide) for long, small boxes
- One lever-feeding gauge lifting mechanism to make easy feed belt adjustments
- Feeder belts adjustment can be done by one hand movement
- Short and long carriers for transport in the pre-breaker
- Four adjustable side plates
- Vibration system in feeder

### Pre-breaking system

- Belt pre-brake system on the right side
- Guide pre-brake system on the left side
- Belt pre-brake system on the left side (standard on 4 and 6 corner option)
- Guide pre-brake system on the right side (standard on 4 and 6 corner option)
- Two carriers with split upper carriers in pre-breaking section. This allows special compound folds such as interior, Z folds (pre-breaking sword can be put at the left side only)
- Manual carrier-positioning system throughout the machine (for both carrier and upper belts)
- Top carriers have reinforced tops throughout for mounting accessories, which are single pin wrench adjustments
- Two upper and lower belt carriers

### Gluing system

- Lower gluing wheel system (3,2 mm)
- Left and right lower gluing system

### Folding section

- Two belt carriers
- Speed adjustment for left and right fold belt
- Entrance of the upper belt carrier adjustable in height
- Top belt can be lifted

### Heavy duty double frame trombone section

- Batch counter and kicker
- Jam detector

### Compression section

- Two operation modes for compressing the folded boxes:
  - ü Auto - belt speed depending on machine speed: box flow without spacing
  - ü Manual - belt runs at a constant speed
- Additional press belt for extra compression for crash lock boxes

### General

- One pin wrench adjustment operation throughout the machine, operator friendly
- All the adjustment can be made without any tools
- Position indicator throughout the machine.
- Upper belt width 20 mm, lower belt width 25 mm on the pre-break & gluing section
- Upper belt width 16 mm, lower belt width 20 mm on the folding section
- Electronic batch counter and kicker
- Electronic remote control
- Easy one-hand carrier position adjustment
- Belt speed detecting encoder on the belt drive shaft

Changes in construction preserved.

The machine Brausse Prima 650 is delivered with the European CE certificate.

